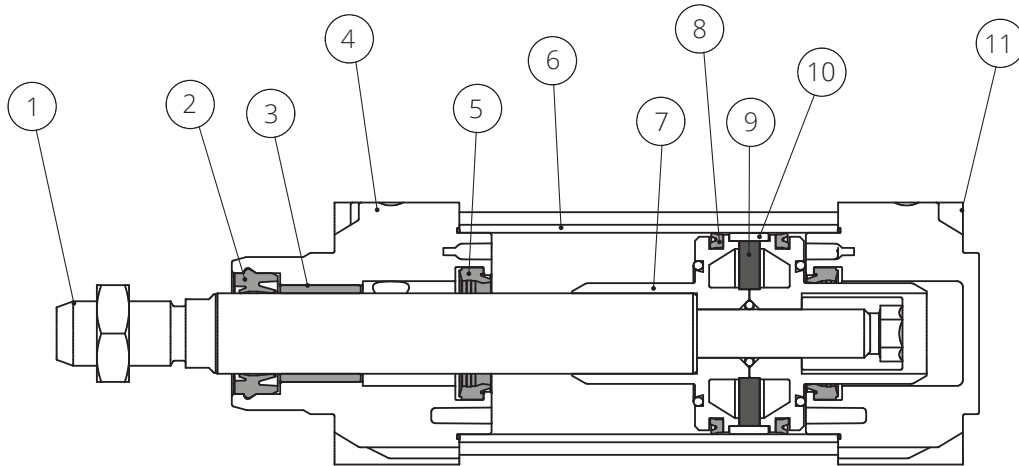



DATI TECNICI
TECHNICAL DATA

PRESSIONE DI ESERCIZIO <i>WORKING PRESSURE</i>	Min 1bar - Max 10bar
TEMPERATURA DI ESERCIZIO <i>WORKING TEMPERATURE</i>	-20°C / +80°C -10°C / +150°C con guarniz. per alte temperature <i>with high temperature seals</i>
ALESAGGI <i>BORES</i>	Ø 32-40-50-63-80-100-125-160
FLUIDO <i>FLUID</i>	aria compressa filtrata, non lubrificata <i>compressed filtered, non lubricated air</i>



1. **STELO**
Acciaio inox AISI 304 / 316
2. **GUARNIZIONE STELO**
Poliuretano P5600
3. **BOCCOLA STELO**
Bronzo sinterizzato
4. **TESTATA ANTERIORE**
Acciaio inox AISI 304 / 316
5. **GUARNIZIONE AMMORTIZZO**
Poliuretano
6. **TUBO**
Acciaio inox AISI 304 / 316

7. **PISTONE**
Alluminio pressofuso
8. **GUARNIZIONE PISTONE**
Poliuretano
9. **MAGNETE**
Plastoferrite
10. **PATTINO DI GUIDA**
PBT + PTFE
11. **TESTATA POSTERIORE**
Acciaio inox AISI 304 / 316

1. **PISTON ROD**
AISI 304 / 316 stainless steel
2. **ROD SEAL**
Polyurethane P5600
3. **ROD BUSHING**
Sintered bronze
4. **FRONT HEAD**
AISI 304 / 316 stainless steel
5. **CUSHION SEAL**
Polyurethane
6. **TUBE**
AISI 304 / 316 stainless steel

7. **PISTON ROD**
Die cast aluminium
8. **PISTON SEAL**
Polyurethane
9. **MAGNET**
Rubber magnet
10. **GUIDE RING**
PBT + PTFE
11. **REAR HEAD**
AISI 304 / 316 stainless steel

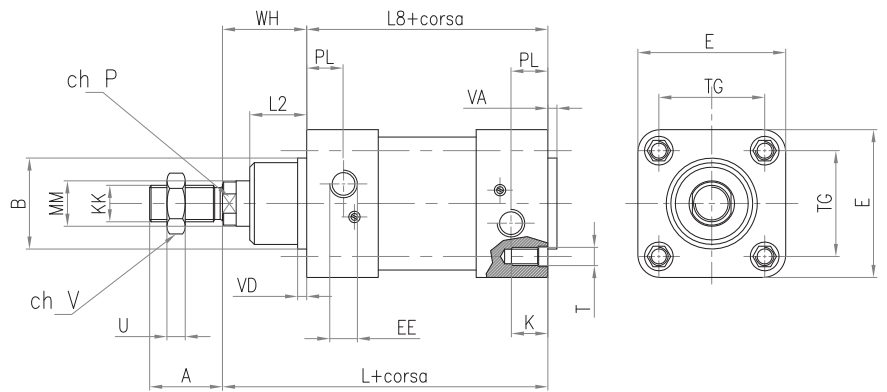
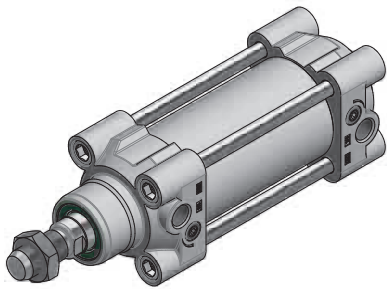
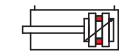
GUARNIZIONI STELO

In funzione dei diversi ambienti in cui ci si trova ad operare, è possibile adottare guarnizione di tenuta e raschia stelo adatte a salvaguardare l'integrità del cilindro.

ROD SEALS

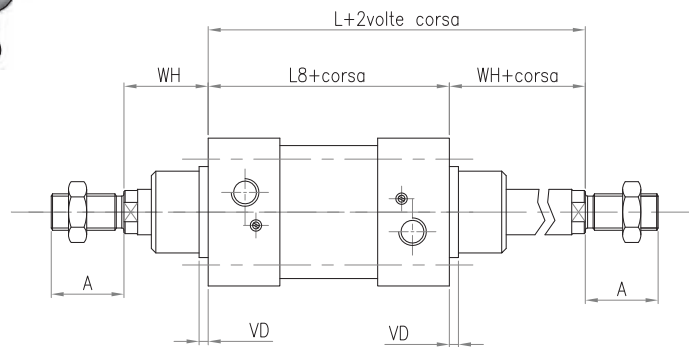
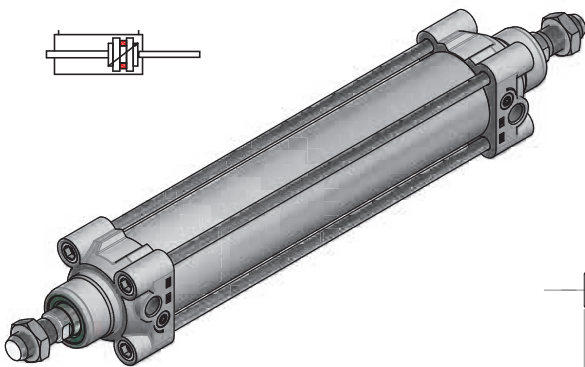
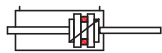
Depending on the different environments in which you are working, it is possible to use sealing gasket and rod scraper suitable to safeguard the integrity of the cylinder.

-	GUARNIZIONE STANDARD APPROVATA FDA <i>STANDARD FDA APPROVED SEAL</i>	Poliuretano (PU) P5600 -20°C / +80°C <i>Polyurethane (PU) P5600 -20°C / +80°C</i>	Applicazioni a diretto contatto con cibo e/o agenti corrosivi <i>Applications in direct contact with foods tuff and/or corrosive agents</i>
VS	GUARNIZIONE PER ALTA TEMPERATURA <i>HIGH TEMPERATURE SEAL</i>	FKM -10°C / +150°C (VITON)	Applicazioni con temperature elevate e/o agenti chimici <i>Applications with high temperature and/or chemical agents</i>
ES	TENUTA STELO + RASCHIATORE <i>SEAL AND SCRAPER</i>	NBR + raschiatore plastico -20°C / +80°C <i>NBR + plastic scraper material -20°C / +80°C</i>	Applicazioni in presenza di polvere e sporco <i>Applications with dust and dirt</i>



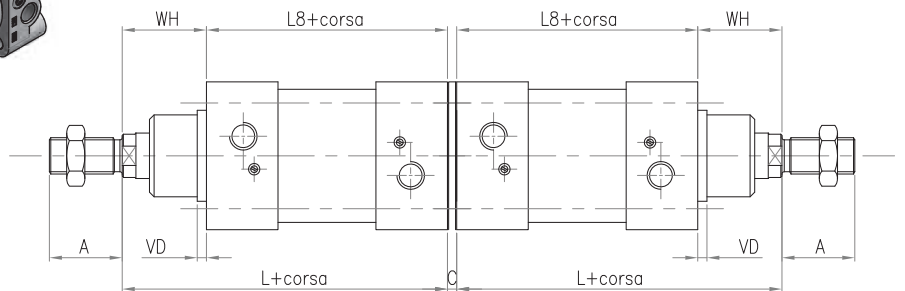
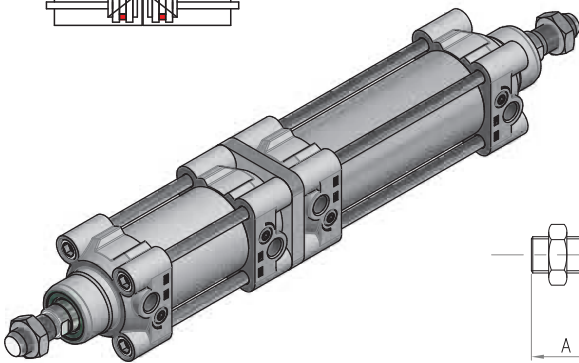
DOPPIO EFFETTO SEMPLICE STELO
 DOUBLE ACTING SIMPLE ROD

SERIE CZ I 304 / 316



DOPPIO EFFETTO STELO PASSANTE
 FRONT DOUBLE ACTING DOUBLE ROD

SERIE CZD I 304 / 316



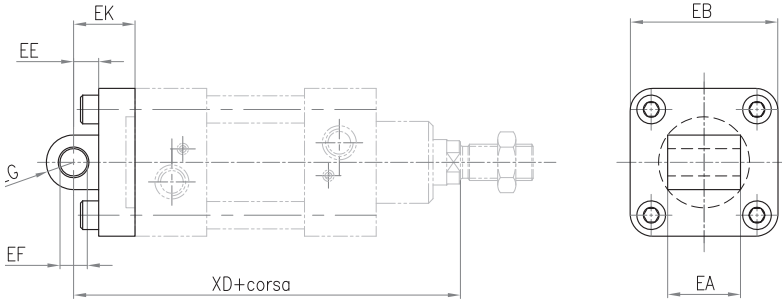
DOPPIO EFFETTO TANDEM CONTRAPPONTO
 DOUBLE ACTING REAR OPPOSED TANDEM

SERIE CZN I 304 / 316

ALESAGGIO BORE SIZE	32	40	50	63	80	100	125	160
A	22	24	32	32	40	40	54	72
ØB	30	35	40	45	45	55	60	65
C	10	10	10	10	10	10	12	12
E	47	54,5	65	75	93	110	134	180
EE	G1/8"	G1/4"	G1/4"	G3/8"	G3/8"	G1/2"	G1/2"	G3/4"
K	16	16	16	16	17	17	20	24
KK	M10x1,25	M12x1,25	M16x1,5	M16x1,5	M20x1,5	M20x1,5	M27x2	M36x2
L	120	135	143	158	174	189	225	260
L2	18	22	25,5	26	32	38	46	55
L8	94	105	106	121	128	138	160	180
Ø MM	12	16	20	20	25	25	32	40
ch P	10	13	17	17	22	22	27	36
PL	13	14	14	16	16	18	18	25,5
T	M6	M6	M8	M8	M10	M10	M12	M16
TG	32,5	38	46,5	56,5	72	89	110	140
U	6	7	8	8	9	9	12	14
ch V	17	19	24	24	30	30	41	55
VA	4	4	4	4	4	4	6	6
VD	5	5	6	6	7	7	10	10
WH	26	30	37	37	46	51	65	80
Z	20	22	25	25	35	35	35	45

Z= LUNGHEZZA AMMORTIZZO

Z= CUSHIONING LENGHT

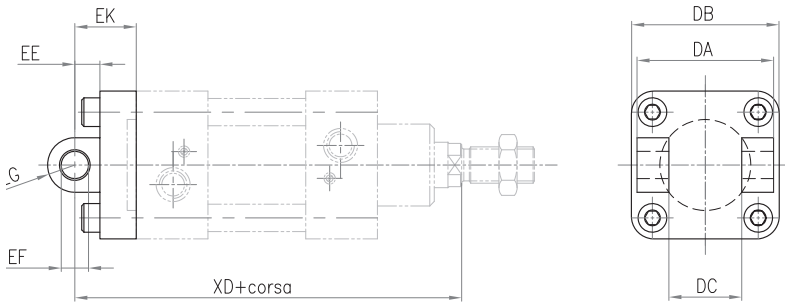


CODICE CODE	CODICE CODE	EA	EB	EE	ØEF	EG	EK	XD
CM 32 I304	CM 32 I316	26	45	13	10	10	22	142
CM 40 I304	CM 40 I316	28	55	16	12	12	25	160
CM 50 I304	CM 50 I316	32	65	16	12	12	27	170
CM 63 I304	CM 63 I316	40	75	21	16	16	32	190
CM 80 I304	CM 80 I316	50	95	22	16	16	36	210
CM 100 I304	CM 100 I316	60	115	27	20	20	41	230
CM 125 I304	CM 125 I316	70	140	30	25	25	50	275

MATERIALE: ACCIAIO INOX AISI 304/316
MATERIAL: AISI 304/316 STAINLESS STEEL

CERNIERA MASCHIO CON BUSSOLE IN ACCIAIO E PTFE (MP4)
MALE HINGE WITH STEEL AND PTFE BUSHES (MP4)

CM I304 | CM I316

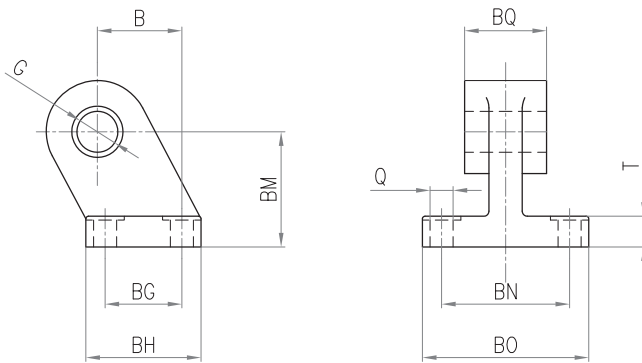


CODICE CODE	CODICE CODE	DA	DB	DC	DE	ØDF	DG	DK	XD
CP 32 I304	CP 32 I316	26	45	45	13	10	10	22	142
CP 40 I304	CP 40 I316	28	55	52	16	12	12	25	160
CP 50 I304	CP 50 I316	32	65	60	16	12	12	27	170
CP 63 I304	CP 63 I316	40	75	70	21	16	16	32	190
CP 80 I304	CP 80 I316	50	95	90	22	16	16	36	210
CP 100 I304	CP 100 I316	60	115	110	27	20	20	41	230
CP 125 I304	CP 125 I316	70	140	130	30	25	25	50	275

MATERIALE: ACCIAIO INOX AISI 304/316
MATERIAL: AISI 304/316 STAINLESS STEEL

CERNIERA FEMMINA CON BUSSOLE IN ACCIAIO E PTFE (MP2)
FEMALE HINGE WITH STEEL AND PTFE BUSHES (MP2)

CP I304 | CP I316

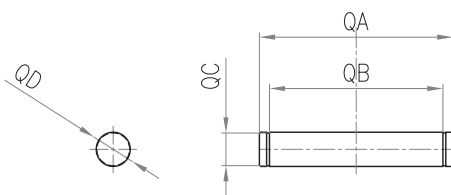


CODICE CODE	CODICE CODE	B	BG	BH	BM	BN	BO	BQ	ØQ	T	ØG
ARA 32 I304	ARA 32 I316	21	18	31	32	38	51	26	6,6	8	10
ARA 40 I304	ARA 40 I316	24	22	35	36	41	54	28	6,6	10	12
ARA 50 I304	ARA 50 I316	33	30	45	45	50	65	32	9	12	12
ARA 63 I304	ARA 63 I316	37	35	50	50	52	67	40	9	14	16
ARA 80 I304	ARA 80 I316	47	40	60	63	66	86	50	11	14	16
ARA 100 I304	ARA 100 I316	55	50	70	71	76	96	60	11	17	20
ARA 125 I304	ARA 125 I316	70	60	90	90	94	124	70	14	20	25

MATERIALE: ACCIAIO INOX AISI 304/316
MATERIAL: AISI 304/316 STAINLESS STEEL

ARTICOLAZIONE A SQUADRA (AB7)
SQUARE HINGE (AB7)

ARA I304 | ARA I316

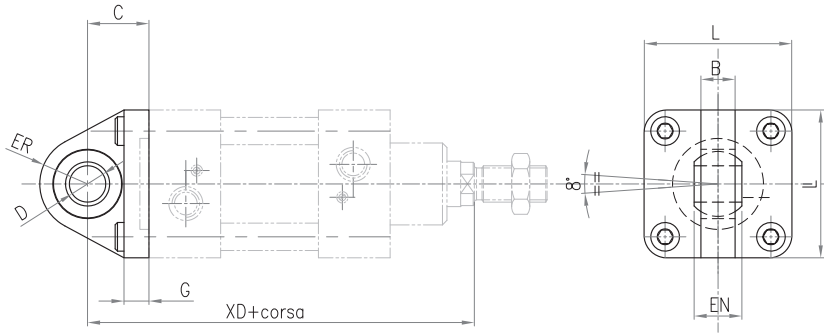


PERNO PER CERNIERA (AA4)
STEEL PIN FOR HINGE (AA4)

PERNO CP I304 | PERNO CP I316

CODICE CODE	CODICE CODE	QA	QB	ØQC	ØQD
PERNO CP32 I304	PERNO CP32 I316	53	46	9,6	10
PERNO CP40 I304	PERNO CP40 I316	60	53	11,5	12
PERNO CP50 I304	PERNO CP50 I316	68	61	11,5	12
PERNO CP63 I304	PERNO CP63 I316	78	71	15,2	16
PERNO CP80 I304	PERNO CP80 I316	98	91	15,2	16
PERNO CP100 I304	PERNO CP100 I316	118	111	19	20
PERNO CP125 I304	PERNO CP125 I316	139	132	23,9	25

MATERIALE: ACCIAIO INOX AISI 304/316
MATERIAL: AISI 304/316 STAINLESS STEEL

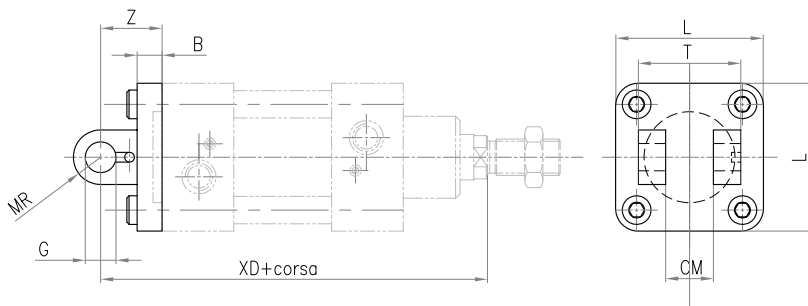


CERNIERA MASCHIO CON SNODO IN ACCIAIO, BRONZO E PTFE (MP6)
MALE HINGE WITH BALL JOINT IN STEEL, BRONZE, AND PTFE (MP6)

CMS I316

CODICE CODE	B	C	ØD	EN	ER	G	L	XD
CMS 32 I316	10,5	22	10	14	16	10	45	142
CMS 40 I316	12	25	12	16	18	10	52	160
CMS 50 I316	15	27	16	21	21	12	65	170
CMS 63 I316	15	32	16	21	23	12	75	190
CMS 80 I316	18	36	20	25	28	16	95	210
CMS 100 I316	18	41	20	25	30	16	115	230
CMS 125 I316	25	50	30	37	40	20	140	275

MATERIALE: ACCIAIO INOX AISI 316
MATERIAL: AISI 316 STAINLESS STEEL

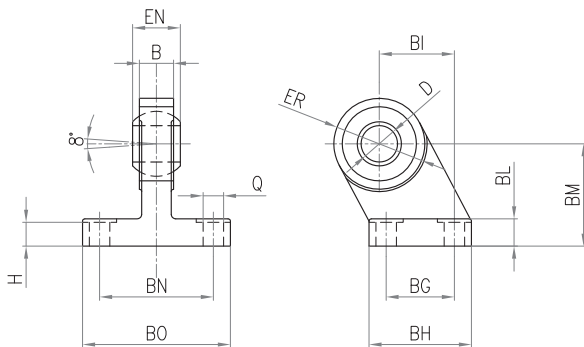


CERNIERA FEMMINA STRETTA (AB6)
NARROW FEMALE HINGE (AB6)

CPS I316

CODICE CODE	B	CM	ØG	MR	L	T	Z	XD
CPS 32 I316	9	14	10	10	45	34	22	142
CPS 40 I316	9	16	12	12	52	40	25	160
CPS 50 I316	11	21	16	14	65	45	27	170
CPS 63 I316	11	21	16	18	75	51	32	190
CPS 80 I316	14	25	20	20	95	65	36	210
CPS 100 I316	14	25	20	22	115	75	41	230
CPS 125 I316	20	37	30	25	140	97	50	275

MATERIALE: ACCIAIO INOX AISI 316
MATERIAL: AISI 316 STAINLESS STEEL

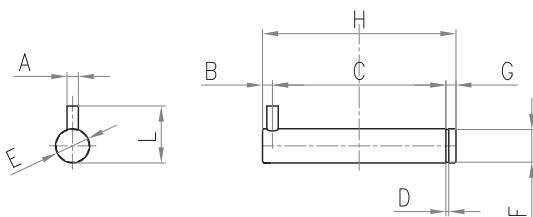


ARTICOLAZIONE A SQUADRA CON SNODO IN ACCIAIO, BRONZO E PTFE
SQUARE HINGE WITH BALL JOINT IN STEEL, BRONZE AND PTFE

ARS I316

CODICE CODE	BI	BG	BH	BL	BM	BN	BO	ØQ	H	EN	B	ØER	ØD
ARS 32 I316	21	18	31	10	32	38	51	6,6	9	14	11	30	10
ARS 40 I316	24	22	35	10	36	41	54	6,6	9	16	12	36	12
ARS 50 I316	33	30	45	12	45	50	65	9	11	21	15	40	16
ARS 63 I316	37	35	50	12	50	52	67	9	11	21	15	46	16
ARS 80 I316	47	40	60	14	63	66	86	11	12	25	18	54	20
ARS 100 I316	55	50	70	15	71	76	96	11	13	25	18	60	20
ARS 125 I316	70	60	90	20	90	94	124	14	17	37	25	80	30

MATERIALE: ACCIAIO INOX AISI 316
MATERIAL: AISI 316 STAINLESS STEEL

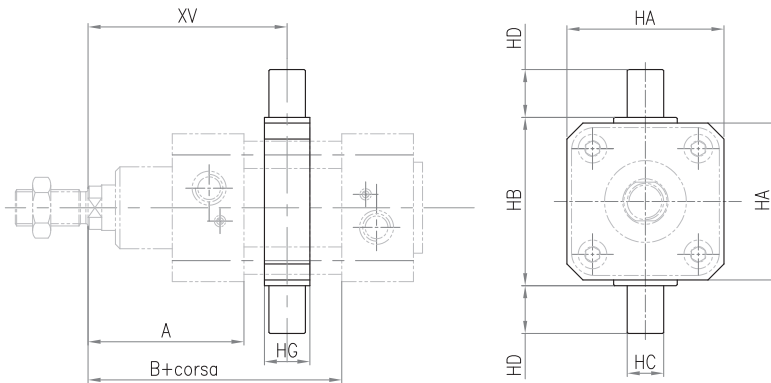


PERNO PER CERNIERA STRETTA (AA6)
PIN FOR NARROW HINGE (AA6)

PERNO CPS I316

CODICE CODE	ØA	B	C	D	ØE	ØF	G	H	L
PERNO CPS32 I316	3	4,5	32,5	1,1	10	9,6	4	41	14
PERNO CPS40 I316	4	6	38	1,1	12	11,5	4	48	16
PERNO CPS50 I316	4	6	43	1,1	16	15,2	5	54	20
PERNO CPS63 I316	4	6	49	1,1	16	15,2	5	60	20
PERNO CPS80 I316	4	6	63	1,3	20	19	6	75	24
PERNO CPS100 I316	4	6	73	1,3	20	19	6	85	24
PERNO CPS125 I316	6	9	94	1,6	30	28,6	7	110	36

MATERIALE: ACCIAIO INOX AISI 316
MATERIAL: AISI 316 STAINLESS STEEL



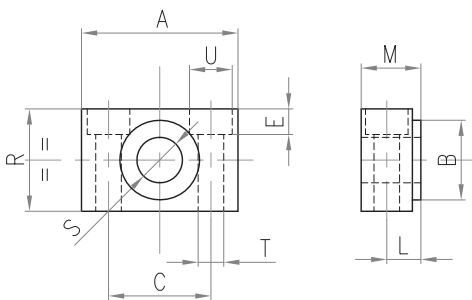
CODICE CODE	CODICE CODE	A	B	HA	HB	ØHC	HD	HG
CIN 32R I304	CIN 32R I316	50	96	46	50	12	12	15
CIN 40R I304	CIN 40R I316	61	104	59	63	16	16	20
CIN 50R I304	CIN 50R I316	68	112	69	75	16	16	20
CIN 63R I304	CIN 63R I316	73	122	84	90	20	20	25
CIN 80R I304	CIN 80R I316	84	136	102	110	20	20	25
CIN 100R I304	CIN 100R I316	92	148	125	132	25	25	30
CIN 125R I304	CIN 125R I316	110	180	155	160	25	25	32

MATERIALE: ACCIAIO INOX AISI 304/316
 MATERIAL: AISI 304/316 STAINLESS STEEL

CERNIERA INTERMEDIA REGOLABILE PER TIRANTI (MT4)
 ADJUSTABLE INTERMEDIATE HINGE FOR TIE RODS (MT4)

CIN R I304

CIN R I316

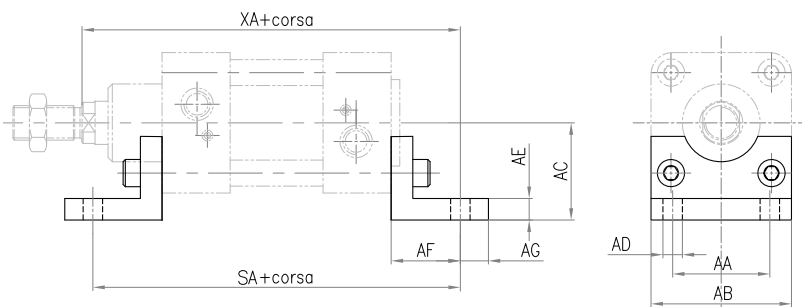


CODICE CODE I316	A	C	E	L	M	R	ØS	ØT	ØU
SUPP 32 I316	46	32	7	10,5	18	30	12	6,6	11
SUPP 40-50 I316	55	36	9	12	21	36	16	9	15
SUPP 63-80 I316	65	42	11	13	23	40	20	11	18
SUPP 100-125 I316	75	50	13	16	28,5	50	25	14	20

MATERIALE: CORPO IN ACCIAIO INOX AISI 316, BOCCOLA IN TECNOPOLIMERO
 MATERIAL: BODY IN AISI 316 STAINLESS STEEL, BUSH IN TECHNOPOLYMER

SUPPORTO PER CERNIERA INTERMEDIA (AT4)
 SUPPORT FOR INTERMEDIATE HINGE (AT4)

SUPP I316



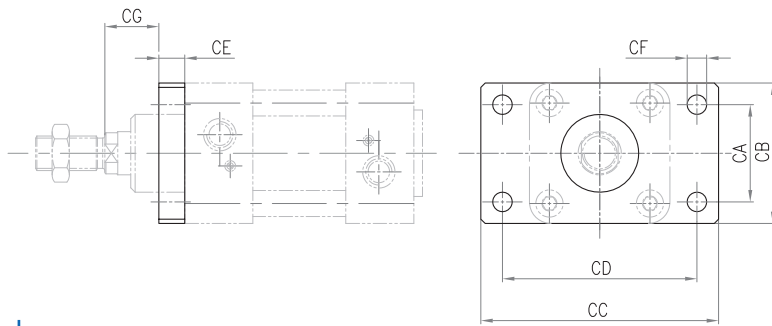
CODICE CODE	CODICE CODE	AA	AB	ØAD	AC	AE	AF	AG	SA	XA
PB 32 I304	PB 32 I316	32	45	7	32	8	24	11	142	144
PB 40 I304	PB 40 I316	36	52	9	36	8	28	8	161	163
PB 50 I304	PB 50 I316	45	65	9	45	10	32	13	170	175
PB 63 I304	PB 63 I316	50	75	9	50	10	32	13	185	190
PB 80 I304	PB 80 I316	63	95	12	63	12	41	14	210	215
PB 100 I304	PB 100 I316	75	115	14	71	12	41	15	220	230
PB 125 I304	PB 125 I316	90	140	16	91	14	45	23	250	270

MATERIALE: ACCIAIO INOX AISI 304/316
 MATERIAL: AISI 304/316 STAINLESS STEEL

PIEDINO BASSO (MS1)
 LOW FOOT MOUNTING (MS1)

PB I304

PB I316

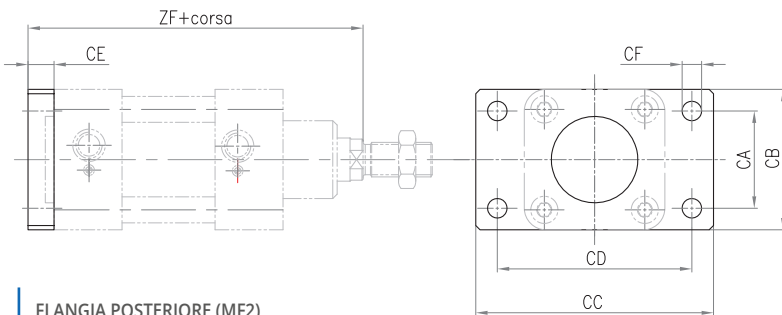


CODICE CODE	CODICE CODE	CA	CB	CC	CD	CE	ØCF	CG
FA 32 I304	FA 32 I316	32	45	80	64	10	7	16
FA 40 I304	FA 40 I316	36	52	90	72	10	9	20
FA 50 I304	FA 50 I316	45	65	110	90	12	9	25
FA 63 I304	FA 63 I316	50	75	120	100	12	9	25
FA 80 I304	FA 80 I316	63	95	150	126	16	12	30
FA 100 I304	FA 100 I316	75	115	170	150	16	14	35
FA 125 I304	FA 125 I316	90	140	205	180	20	16	45

MATERIALE: ACCIAIO INOX AISI 304/316
MATERIAL: AISI 304/316 STAINLESS STEEL

FLANGIA ANTERIORE (MF1)
HEAD FLANGE(MF1)

FA I304 FA I316

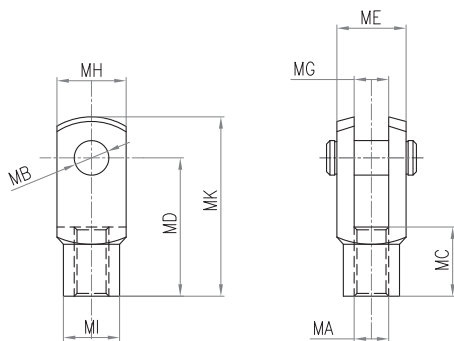


CODICE CODE	CODICE CODE	CA	CB	CC	CD	CE	ØCF	ZF
FP 32 I304	FP 32 I316	32	45	80	64	10	7	130
FP 40 I304	FP 40 I316	36	52	90	72	10	9	145
FP 50 I304	FP 50 I316	45	65	110	90	12	9	155
FP 63 I304	FP 63 I316	50	75	120	100	12	9	170
FP 80 I304	FP 80 I316	63	95	150	126	16	12	190
FP 100 I304	FP 100 I316	75	115	170	150	16	14	205
FP 125 I304	FP 125 I316	90	140	205	180	20	16	245

MATERIALE: ACCIAIO INOX AISI 304/316
MATERIAL: AISI 304/316 STAINLESS STEEL

FLANGIA POSTERIORE (MF2)
REAR FLANGE(MF2)

FP I304 FP I316

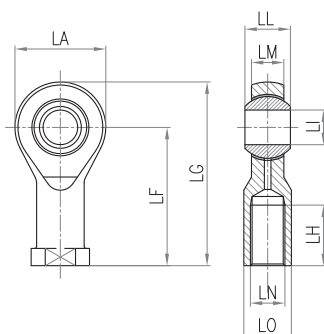


CODICE CODE	CODICE CODE	MA	ØMB	MC	MG	ME	MH	ØMI	MD	MK
GFP 32 I304	GFP 32 I316	M10x1,25	10	20	10	20	20	18	40	52
GFP 40 I304	GFP 40 I316	M12x1,25	12	24	12	24	24	20	48	62
GFP 50-63 I304	GFP 50-63 I316	M16x1,5	16	32	16	32	32	26	64	83
GFP 80-100 I304	GFP 80-100 I316	M20x1,5	20	40	20	40	40	34	80	105
GFP 125 I304	GFP 125 I316	M27x2	30	56	30	55	55	48	110	148
GFP 160 I304	GFP 160 I316	M36x2	35	72	35	70	70	60	144	188

MATERIALE: ACCIAIO INOX AISI 304/316
MATERIAL: AISI 304/316 STAINLESS STEEL

FORCELLA CON PERNO
CLEVIS WITH PIN

GFP I304 GFP I316



CODICE CODE	CODICE CODE	LN	LO	LH	ØLI	LM	LL	ØLA	LF	LG
GSI 32 I304	GSI 32 I316	M10x1,25	17	20	10	11	14	28	43	57
GSI 40 I304	GSI 40 I316	M12x1,25	19	22	12	12	16	32	50	66
GSI 50-63 I304	GSI 50-63 I316	M16x1,5	22	28	16	15	21	42	64	85
GSI 80-100 I304	GSI 80-100 I316	M20x1,5	30	33	20	18	25	50	77	102
GSI 125 I304	GSI 125 I316	M27x2	41	51	30	25	37	70	110	145
GSI 160 I304	GSI 160 I316	M36x2	50	56	35	28	43	80	125	165

MATERIALE: CORPO IN ACCIAIO INOX AISI 304/316,
SNODO IN ACCIAIO INOX AISI 304/316, BRONZO E PTFE

MATERIAL: BODY IN AISI 304/316 STAINLESS STEEL,
EYE IN AISI 304/316 STAINLESS STEEL, BRONZE AND PTFE

SNODO SFERICO
ROD EYE

GSI I304 GSI I316

